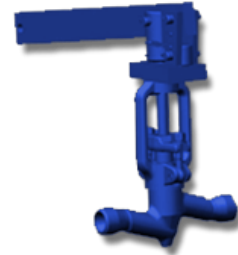


Name: 9s-3-3-2
Type: Control valves - 9s type
Subtype: Medium parameters valves
Operating medium: water-steam
Body material: 20



DESCRIPTION:

Control valves are the most used valve type designed for continuous or discrete adjustment of flow and pressure.

TECHNICAL DATA:

Diameter, DN: 50 mm
Pressure, PN: 6.3 MPa
Temperature: 425 C°
Maximum pressure differential: 1 MPa
Discharge rate (Kv100): 5.75 m³/h
Rotational moment on the shaft: 82 Ngm
Operating stroke: 30 mm

DIMENSIONS:

D1 (D3): 50 mm
D2 (D4): 58 mm
L: 240 mm
H: 226 mm
A: 68 mm
Weight: 8.3 кг

ACTUATOR:

Control type: P
Actuator model: MЭO-250/25-0,25Y-99K Y2
Actuator power: 0.26 kW
Full stroke time: 11.5 s

DIMENSIONAL DRAWING:

