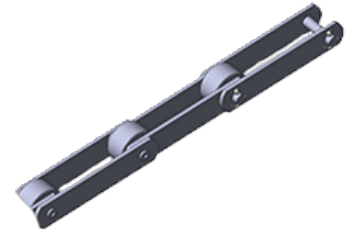


**Name:** m-1800  
**Type:** Pulling block chains  
**Subtype:**  
**GOST:** ГОСТ 588-81  
**ISO:**



## DESCRIPTION:

Pulling block chains are widely used in shipbuilding, machine-building industry, metallurgy, wood-pulp and paper industry, sugar refining industry, in water treatment plants, industrial transportation facilities, in drives of conveyors, elevators, road engineering and conveyors for different purposes.

## TECHNICAL DATA:

Толщина пластин: 22,0 mm  
Pitch цепи, t : 400-1000 mm  
Ultimate tensile strength: 1800 (180000) kN (kgs)

## DIMENSIONS:

Pin length (b1) not more: 260 mm  
Internal plates distance (b3) not less: 110 mm  
(b4) not more: 370 mm  
(d): - mm  
Pin diameter (d1): 60,0 mm  
Bush diameter (d2): 85,0 mm  
Pulley diameter (d3): 118,0 mm  
Bushing bore diameter (S) not less: 22,0 mm  
Plates width (h): 150 mm

## DIMENSIONAL DRAWING:

