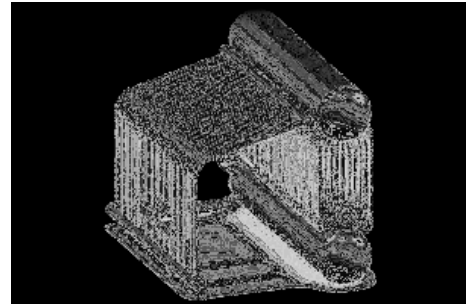


Type: Steam boilers
Model: DE type (natural gas / fuel oil)
Name: DE-25-14-225GM-O
Alias names: ДЕ-25-14-225ГМ-О, E-25-1,4-225ГМ
Fuel: natural gas / fuel oil



DESCRIPTION:

This type of vertical-watertube gas-and-oil-fired steam boilers are designed for production of saturated steam for needs of different industries, heating, ventilation and hot-water supply systems.

TECHNICAL DATA:

Steam capacity: 25.0 t/h
Output pressure: 1.3 (13) Pa (kp/cm²)
Output temperature: 225 C
Supply water temperature: 100 C
Efficiency: 93,0/90,89 %
Fuel consumption: 1868/1740 kg/h

DIMENSIONS:

Integrated boiler dimensions: 10095x5240x 6117 mm
Weight: 27360 kg