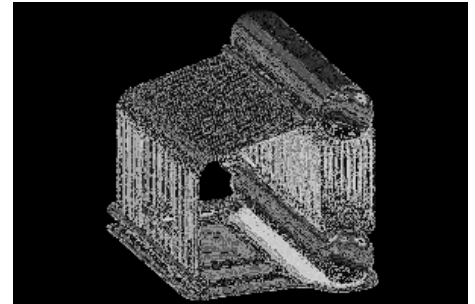


**Type:** Steam boilers  
**Model:** DSE type (natural gas / fuel oil, diesel, oil)  
**Name:** DSE-4,0-14GM  
**Alias names:** ДСЕ-4,0-14ГМ, Е-4,0-1,4ГМ  
**Fuel:** natural gas / fuel oil, diesel, oil



## DESCRIPTION:

This type of vertical-watertube gas-and-oil-fired steam boilers are designed for production of saturated steam for needs of different industries, heating, ventilation and hot-water supply systems.

## TECHNICAL DATA:

Steam capacity: 4.0 t/h  
Output pressure: 1.3 (13) Pa (kp/cm<sup>2</sup>)  
Output temperature: 194 C  
Supply water temperature: 50/100 C  
Efficiency: 91/90 %  
Fuel consumption: 276/256 kg/h

## DIMENSIONS:

Integrated boiler dimensions: 4680x3100x3260 mm  
Weight: 7056 kg