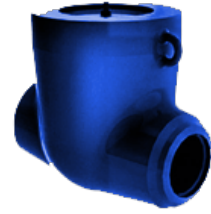


**Name:** 912-325-0bm  
**Type:** Swing check valves  
**Subtype:** High parameters valves  
**Operating medium:** steam  
**Body material:** 15X1M1ΦЛ



#### DESCRIPTION:

Swing check valves are designed to prevent a change of fluid flow direction in case of emergency situations. These valves are used at pipelines as automatic safety devices.

#### TECHNICAL DATA:

Diameter, DN: 325 mm  
Pressure, PN: 30.4 MPa  
Temperature: 510 C  
Hydraulic resistance coefficient: 3.4

#### DIMENSIONS:

D1: 330 mm  
D2: 450 mm  
L: 1440 mm  
H: 560 mm  
A: 230 mm  
Weight: 1425 кг

#### DIMENSIONAL DRAWING:

