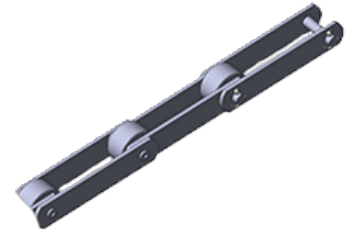


Name: m-1800
Type: Pulling block chains
Subtype:
GOST: ГОСТ 588-81
ISO:



DESCRIPTION:

Pulling block chains are widely used in shipbuilding, machine-building industry, metallurgy, wood-pulp and paper industry, sugar refining industry, in water treatment plants, industrial transportation facilities, in drives of conveyors, elevators, road engineering and conveyors for different purposes.

TECHNICAL DATA:

Толщина пластин: 22,0 mm
Pitch цепи, t : 400-1000 mm
Ultimate tensile strength: 1800 (180000) kN (kgs)

DIMENSIONS:

Pin length (b1) not more: 260 mm
Internal plates distance (b3) not less: 110 mm
(b4) not more: 370 mm
(d): - mm
Pin diameter (d1): 60,0 mm
Bush diameter (d2): 85,0 mm
Pulley diameter (d3): 118,0 mm
Bushing bore diameter (S) not less: 22,0 mm
Plates width (h): 150 mm

DIMENSIONAL DRAWING:

