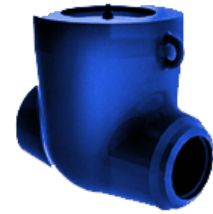


**Name:** 912-200-0b  
**Type:** Swing check valves  
**Subtype:** High parameters valves  
**Operating medium:** water  
**Body material:** 20ГЦЛ



#### DESCRIPTION:

Swing check valves are designed to prevent a change of fluid flow direction in case of emergency situations. These valves are used at pipelines as automatic safety devices.

#### TECHNICAL DATA:

Diameter, DN: 200 mm  
Pressure, PN: 37.3 MPa  
Temperature: 280 C  
Hydraulic resistance coefficient: 1

#### DIMENSIONS:

D1: 203 mm  
D2: 290 mm  
L: 840 mm  
H: 560 mm  
A: 230 mm  
Weight: 830 кг

#### DIMENSIONAL DRAWING:

