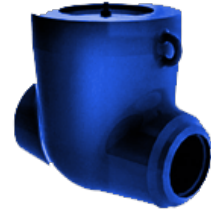


Name: 912-400-0
Type: Swing check valves
Subtype: High parameters valves
Operating medium: water
Body material: 20ГЦЛ



DESCRIPTION:

Swing check valves are designed to prevent a change of fluid flow direction in case of emergency situations. These valves are used at pipelines as automatic safety devices.

TECHNICAL DATA:

Diameter, DN: 400 mm
Pressure, PN: 37.3 MPa
Temperature: 280 C
Hydraulic resistance coefficient: 2

DIMENSIONS:

D1: 406 mm
D2: 550 mm
L: 1300 mm
H: 1005 mm
A: 335 mm
Weight: 4180 кг

DIMENSIONAL DRAWING:

