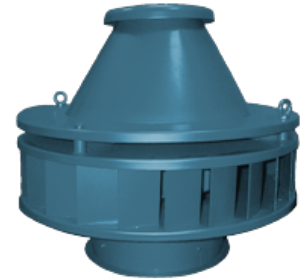


Name: RF-10-SE-15
Russian name: ВКР ДУ №10, 15 кВт
Type: Roof ID fans
Notes:



DESCRIPTION:

The smoke exhaust roof fans of RF type are widely used in exhaust and general systems of ventilation in industrial and civil buildings. These low pressure fans are manufactured in two modifications:

-
 - Modification 01 - for 120 minute removal of air-flue gas mixtures (up to 400 °C) in case of fire
-
 - Modification 02 - for 90 minute removal of air-flue gas mixtures (up to 600 °C) in case of fire

AERODYNAMIC PERFORMANCE:

Capacity: 51.7 ths. m³
Total pressure: 1050 Pa
Temperature: 600 C
Efficiency: 65-88 %
Dustiness: 0.1 g/m³

DIMENSIONS:

Length: 1450 mm
Width: 1450 mm
Height: 1508 mm
Weight: 546 kg

ELECTRIC MOTOR:

Power: 15 kW
Rate speed: 1000 rpm
Moment of inertia: n/a kg*m²

AUXILIARIES:

Actuator: n/a Hm

DELIVERY OPTIONS:

Railway: Flatcar: 1 | Open wagon: 0 | Schnabel car: 0

DIMENSIONAL DRAWING:

