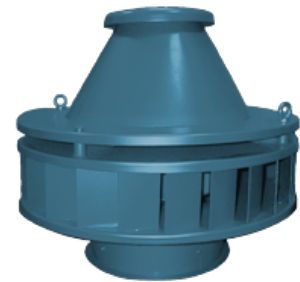


Name: RF-6.3-SE-2.2
Russian name: ВКР ДУ №6,3, 2,2 кВт
Type: Roof ID fans
Notes:



DESCRIPTION:

The smoke exhaust roof fans of RF type are widely used in exhaust and general systems of ventilation in industrial and civil buildings. These low pressure fans are manufactured in two modifications:

 - Modification 01 - for 120 minute removal of air-flue gas mixtures (up to 400 °C) in case of fire

 - Modification 02 - for 90 minute removal of air-flue gas mixtures (up to 600 °C) in case of fire

AERODYNAMIC PERFORMANCE:

Capacity: 11.5 ths. m³

Total pressure: 400 Pa

Temperature: 600 C

Efficiency: 65-88 %

Dustiness: 0.1 g/m³

DIMENSIONS:

Length: 890 mm

Width: 890 mm

Height: 963 mm

Weight: 149 kg

ELECTRIC MOTOR:

Power: 2,2 kW

Rate speed: 1000 rpm

Moment of inertia: n/a kg*m²

AUXILIARIES:

Actuator: n/a Hm

DELIVERY OPTIONS:

Railway: Flatcar: 1 | Open wagon: 0 | Schnabel car: 0

DIMENSIONAL DRAWING:

