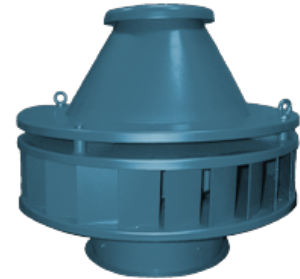


**Name:** RF-6.3-SE-5.5  
**Russian name:** ВКР ДУ №6,3, 5,5 кВт  
**Type:** Roof ID fans  
**Notes:**



#### DESCRIPTION:

The smoke exhaust roof fans of RF type are widely used in exhaust and general systems of ventilation in industrial and civil buildings. These low pressure fans are manufactured in two modifications:

<br> - Modification 01 - for 120 minute removal of air-flue gas mixtures (up to 400 °C) in case of fire

<br> - Modification 02 - for 90 minute removal of air-flue gas mixtures (up to 600 °C) in case of fire

#### AERODYNAMIC PERFORMANCE:

Capacity: 17.9 ths. m<sup>3</sup>  
Total pressure: 970 Pa  
Temperature: 600 C  
Efficiency: 65-88 %  
Dustiness: 0.1 g/m<sup>3</sup>

#### DIMENSIONS:

Length: 890 mm  
Width: 890 mm  
Height: 963 mm  
Weight: 149 kg

#### ELECTRIC MOTOR:

Power: 5,5 kW  
Rate speed: 1500 rpm  
Moment of inertia: n/a kg\*m<sup>2</sup>

#### AUXILIARIES:

Actuator: n/a Hm

#### DELIVERY OPTIONS:

Railway: Flatcar: 1 | Open wagon: 0 | Schnabel car: 0

DIMENSIONAL DRAWING:

